

# Wildfire Risk Reduction

## Burns Lake BC

January 1, 2023

Page 1 / 2

**Agencies Involved:** BC Wildfire Service, Chinook Community Forest and Nadina Natural Resource District

### What is Community Resiliency Investment

The Community Resiliency Investment (CRI) funds wildfire risk reduction activities within the Wildland Urban Interface (WUI) that are at highest risk of wildfire, and include tactical planning, site level planning, and operational treatment. The CRI program was announced by the provincial government in 2018 and is intended to reduce the risk of wildfires and mitigate their impacts on BC communities.

### Burns Lake BC & Highway 16 Fuel Management Treatment Areas

The Crown Land Wildfire Risk Reduction Tactical Plan for Burns Lake, Rose Lake, Sheraton & Highway 16 corridor has identified priority fuel management treatment units around Rose Lake and Sheraton. These areas were identified as high priority for wildfire risk reduction treatment based on stand characteristics, prevailing winds, local topography, and proximity to structures and community.

#### Wildfire Risk Reduction Treatment Options:

- Fine surface fuel reduction
- Pruning to remove ladder fuel
- Partial harvest with deciduous retention
- Clearcut with deciduous retention

#### Local Considerations Include:

- Visual quality objectives from the lake
- Steep slope stability
- Firewood opportunities
- Recreation site aesthetics and safety
- Wildlife habitat features

### Wildfire Risk Reduction Fuel Breaks

#### Fuel Break locations are determined based on:

- Proximity to the value (private property/community)
- Ability to anchor to low risk features or fuel types
- Ability for suppression success
- Fire weather influences that would increase risk (fuel, weather, and topography) – which are the biggest influence on the prioritization of fuel break/fuel treatment opportunities

**Primary Fuel Breaks** are designed to modify fire behaviour and create fire suppression options that reduce the risk of fire reaching or spotting into a community and/or adjacent private lands.

#### Contacts: Ken Nielsen, COMFOR Manager

<https://chinookcomfor.ca/>

Ken.Nielsen@chinookcomfor.ca (250) 692-0630

#### Hans Erasmus, Licensed Authorizations Officer

Wildfire Risk Reduction Lead for the Nadina Natural Resource District

Hans.Erasmus@gov.bc.ca (250) 876-6747

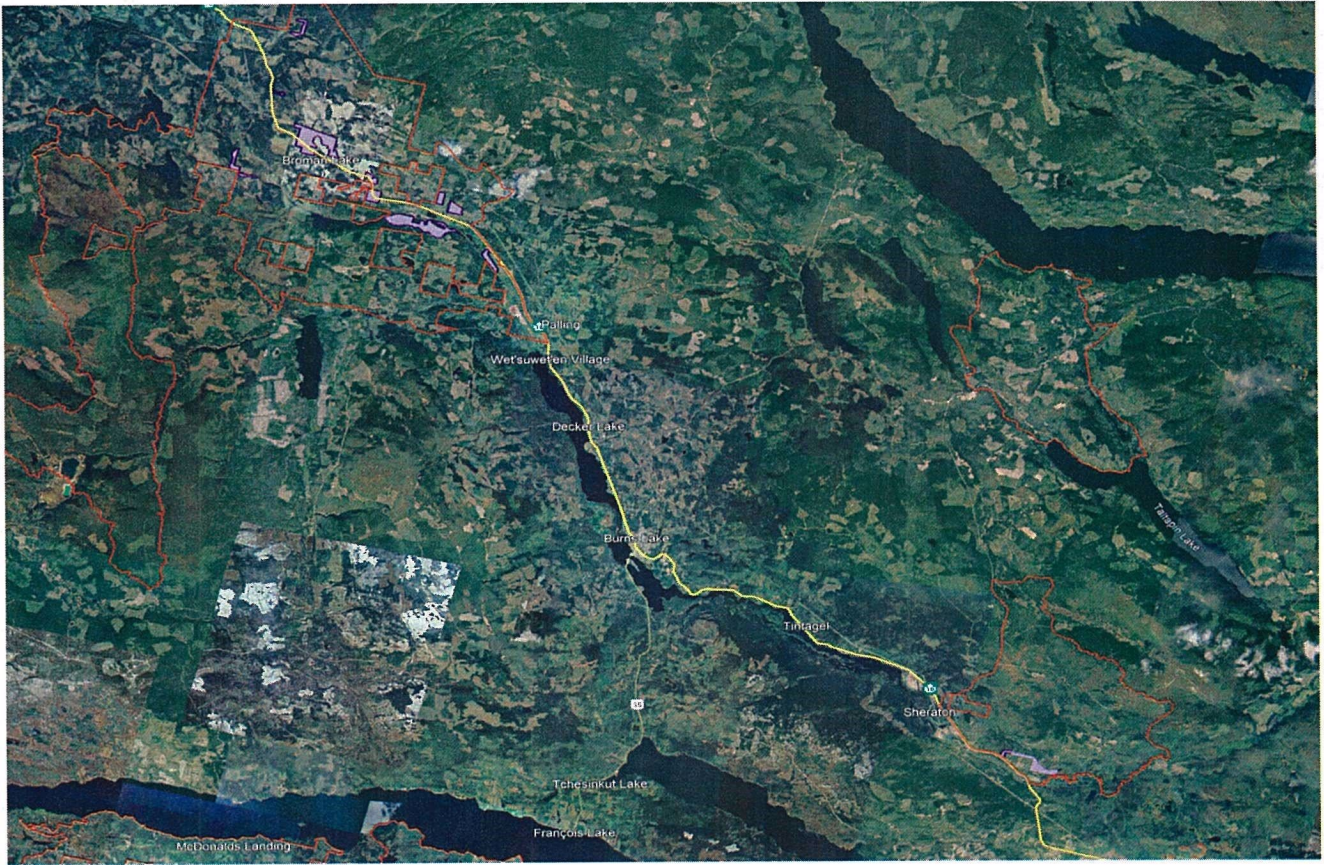


BRITISH COLUMBIA  
**FireSmart**



**CHINOOK**  
Community Forest





### BE PREPARED: REDUCE YOUR RISK OF WILDFIRE

The FireSmart program is designed to reduce the risk of wildfire near your home and neighbourhood, providing a better opportunity for firefighters to defend your home in an emergency wildfire situation. Whether you are a homeowner, an active member of your community, or a participant in local government, here are simple steps you can take to begin increasing your community's resilience to wildfires:

1. Visit **[www.FireSmartBC.ca](http://www.FireSmartBC.ca)**
2. Take the **FireSmart 101** online course
3. Take the **FireSmart Home Assessment** and the **Wildfire Exposure Assessment**
4. Download the **FireSmart Homeowners Manual**
5. Learn about the **FireSmart Canada Community Recognition Program (FCCRP)**
6. Sign up for the **FireSmart BC newsletter**
7. Learn about the **Community Resiliency Investment (CRI) Program**
8. Browse the **Resource Library** for educational materials that best suit you and your community

